



baja designs[®]
THE SCIENTISTS OF LIGHTING

**(23-on) Ford Super Duty A-Pillar Kit
(44-8210 - 44-8213 & 44-8210-UP - 44-8213-UP)**



2950 Norman Strasse San Marcos, CA 92069

Phone 760-560-2252 X3 • Fax 760-560-0383

info@bajadesigns.com • www.bajadesigns.com



baja designs[®]
THE SCIENTISTS OF LIGHTING

LIMITED LIFETIME WARRANTY

Baja Designs proudly offers a LIFETIME WARRANTY against manufacturer's defect on all the products that we manufacture.

These are comprehensive warranties; other than the exclusions below – you're covered. If your LED or HID bulb burns out, you're covered. Additionally, cutting off our connector or changing your lenses does not automatically void your warranty.

Exclusions:

Installation errors, abuse, misuse, or crash damage. You must be the original owner of the product and can supply proof of purchase.

Baja Designs manufactures its own products as well as resells products manufactured by others. Baja Designs makes no express or implied warranties on products not manufactured by Baja Designs including without limitation any warranties or merchantability and fitness for a purpose. We will, however, pass on all warranties made by the manufacturer, who has sole responsibility for performing such warranties.

Baja Designs will pay the freight if your product is less than 90 days old, otherwise defective products must be returned to Baja Designs, Inc., freight prepaid. At our option, we will repair or replace items in question and return them at no charge. If the identical product is no longer available, we will replace it with a similar product of equal value. Baja Designs Inc. will not be responsible for any indirect or consequential damages in connection with defective merchandise.

Items purchased through a Baja Designs authorized dealer must be returned through the dealer. Only available on LED auxiliary lights and product must be in sellable condition at MSRP. Product that has been damaged in any way after the original purchase date will be excluded from this guarantee.

Indemnification:

Buyer hereby acknowledges off-roading, racing and driving at night are dangerous activities and that the products and/or supplies purchased from Baja Designs are used in an inherently dangerous activity that may endanger life and limb; and in no event shall the seller, or seller's heirs and assigns, be held liable for consequential damages, nor shall seller's liability on any claim for damages arising out of or connected with the sale, delivery, or use of purchased products and/or supplies exceed the purchase price of the products and/or supplies.

Buyer is responsible for ensuring that it uses the products (and its vehicle) in accordance with all applicable laws, regulations, guidelines, and standards of care. Buyer acknowledges that some products may only be used when off-roading, and Buyer will comply with all vehicle and road safety guidelines. Buyer is solely responsible for (and will indemnify and hold Bestop harmless for) any claims, losses, damages, fines, fees, costs, or other amounts arising out of Buyer's non-compliance with these provisions.

****For a color copy of instructions, visit your vehicle specific application on BajaDesigns.com ****

Required Tool(s):

- | | |
|--|--------------------|
| • T20 Torx | Needle nose pliers |
| • 4mm Allen wrench | Step drill bit |
| • 7mm, 10mm, 13mm, 7/16", 9/16" socket | Pick |
| • 13mm, 9/16" wrench | Trim removal tool |

Parts List:

 <p>(Qty: 1) XL or LP4, Pair</p>	 <p>(44-9425) (Qty: 1) DS Super Duty A-Pillar Bracket</p>	 <p>(44-9426) (Qty: 1) PS Super Duty A-Pillar Bracket</p>	 <p>(65-0215) (Qty: 2) XL or LP4 Parts Bag</p>
 <p>(20-9156) (Qty: 4) 1/4" Fender Washer</p>	 <p>(20-1612) (Qty: 8) 8" Zip-tie</p>	 <p>(64-0094) (Qty: 1) XL Upfitter Harness *XL Upfitter Only*</p>	 <p>(61-3609) (Qty: 1) 55" 3-pin splitter *XL Upfitter Only*</p>
 <p>(64-0180) (Qty: 1) Trigger Harness *LP4 Upfitter Only*</p>			

To begin, make sure the vehicle is in park, on level ground and the parking brake is engaged.

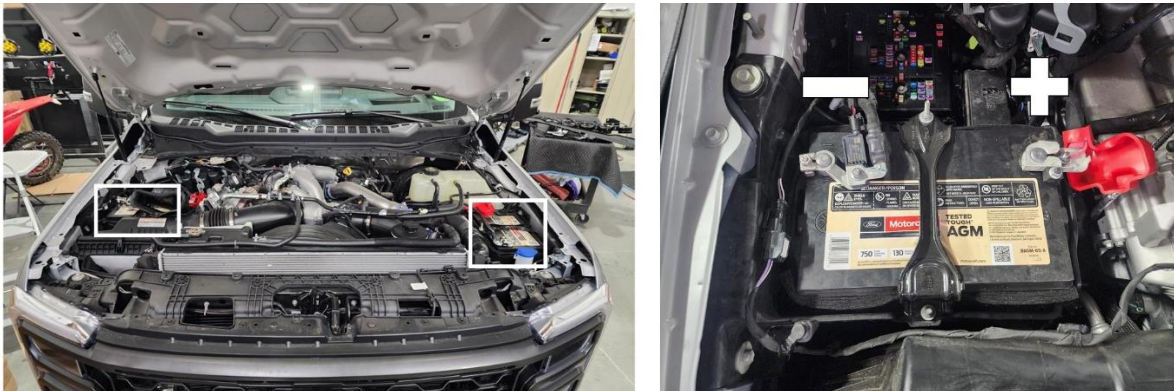
Step 1:

Remove the windshield wipers by lifting the small silver latch and pulling upwards. Remove the antenna by unthreading it from the receiver.



Step 2:

With a 10mm socket, disconnect the negative battery cable from both batteries (boxed) (some vehicles may have only one battery). Ensure the cables are secured in such a way that they cannot touch the negative terminal.



Step 3:

Disconnect the plastic trim clips holding the outer cowl panel to the vehicle. Pull the panel up and set it across the engine bay to allow access to the base of the A-Pillars. With a 7mm socket, remove the 3 bolts holding in the antenna receiver.



Step 4:

Starting on the PS, use a 10mm socket to remove the bolt holding on the front fender at the base of the A-pillar and a 13mm socket to loosen the rear hood hinge bolt.



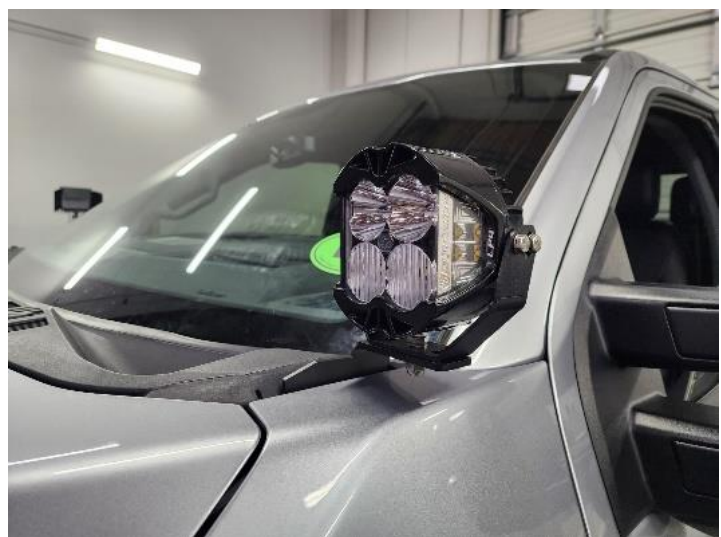
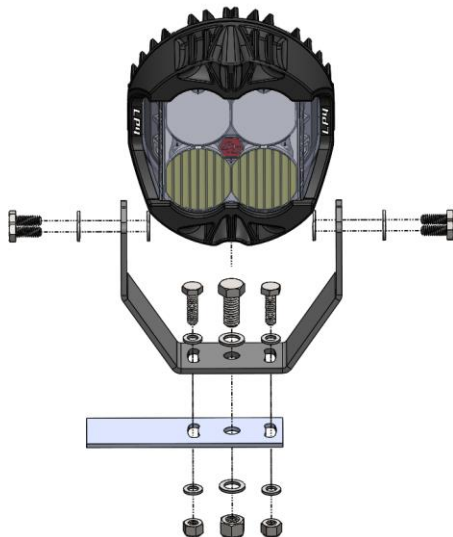
Step 5:

Slide the PS A-pillar bracket into position and tighten down the 13mm head bolt. Use up to 2 of the provided fender washers to take up the space between the bracket and the fender.



Step 6:

Find the included hardware bag and place the 9/16" head hex bolt and washer through the large hole in the light bracket. Attach the light to the bracket using the 7/16" head hex bolts and washers. Use the washer and nyloc nut to attach the light to the A-pillar bracket. Repeat steps 4-6 on the other side of the truck.



XL Upfitter only

Locate and detach the upfitter fuse box located near the PS fuse box (boxed) by pressing in the two locking tabs to access the bundle of wires underneath it. Take the included upfitter wiring harness and attach the white wire scotchlok to the desired auxiliary wire by pressing it closed around it with a set of pliers. Reinstall the fuse box.



Aux Switch	Wire Color	Amp Rating
Aux 1	Bn/Gn	25
Aux 2	Vt/Og	25
Aux 3	Bu/Gn	25
Aux 4	Gy/Bn	25
Aux 5	Bn/Ye	40
Aux 6	Gy/Og	40

Connect the 55" splitter to the upfitter wiring harness. Route the splitter's leads through the engine bay and plug them into the lights. Secure the wires so they do not get pinched when closing the hood or touch hot or rotating components.

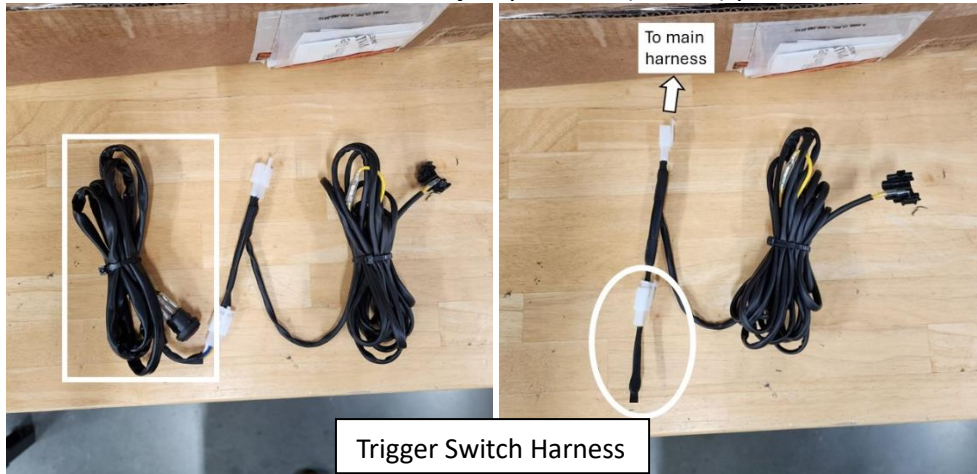


Carefully cut back the sheathing on the upfitter harness around the wiring till the black wire can reach the negative battery terminal without straining. Attach the black wire to the negative battery cable and reattach the cable to the battery.



LP4 Upfitter only

Locate the included wiring harness and disconnect the white switch lead portion. Find the trigger switch harness and plug it into the main harness. Disconnect the switch lead on the trigger switch harness (boxed) and connect in the small jumper wire (circled) provided.



Locate and detach the upfitter fuse box located near the PS fuse box (boxed) by pressing in the two locking tabs to access the bundle of wires underneath it. Take the long yellow wire of the trigger switch harness and attach the scotchlok connector to the desired auxiliary wire by pressing it closed around it with a set of pliers. Reinstall the fuse box.

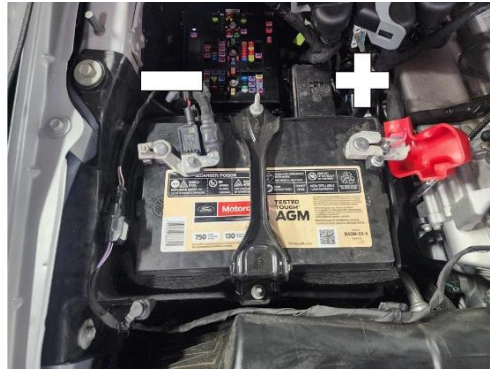


Aux Switch	Wire Color	Amp Rating
Aux 1	Bn/Gn	25
Aux 2	Vt/Og	25
Aux 3	Bu/Gn	25
Aux 4	Gy/Bn	25
Aux 5	Bn/Ye	40
Aux 6	Gy/Og	40

Route the light leads of the main harness through the engine bay and plug them into the lights. Secure the wires so they do not get pinched when closing the hood or touch hot or rotating components.



With the 10mm socket, attach the red ring terminal to the positive post of the battery.



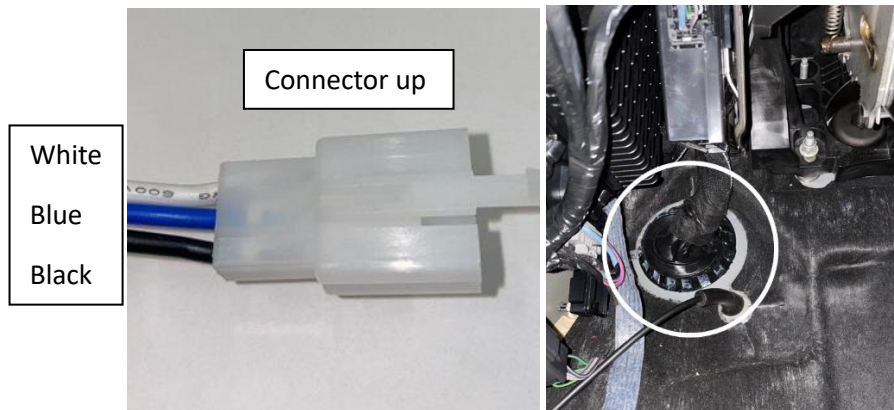
Toggle Switch Only

Route the light leads of the main harness through the engine bay and plug them into the lights. Secure the wires so they do not get pinched when closing the hood or touch hot or rotating components.

Run the switch lead across the firewall and down to the passthrough grommet near the DS footwell.



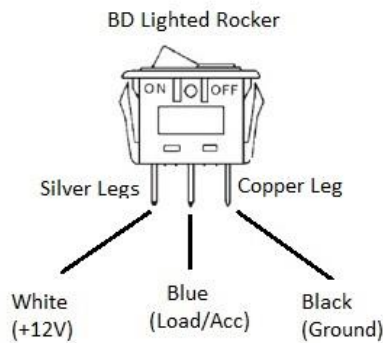
Locate the white connector that attaches the switch to the main harness and disconnect it. With a pick, remove the wire terminals from the connector. Run the wires switch lead, terminals first, through the wire passthrough (circled) starting inside the cab. Reinstall the terminals into the connector and reattach it to the main harness.



Locate the panel on the side of the dash and remove the door seal around it. Gently pull outwards on the panel to remove it. Remove the bezel around the vent by pulling directly backwards. With a T20 Torx (boxed) and 7mm socket (triangle), remove the 3 screws securing the trim panel surrounding the headlight controls. Gently pull the panel backwards to allow access behind it.



Take a reference photo of the switch's wiring output. Disconnect the spade connectors and run the wires through the newly created switch hole. Reconnect the wires and press the switch into place.



Skip this step if adding backlight

Using a 10mm socket, attach the red wire to the positive battery cable and the black to the negative battery cable. Secure any excess wire in a service loop and secure out of the way. The install is now complete.

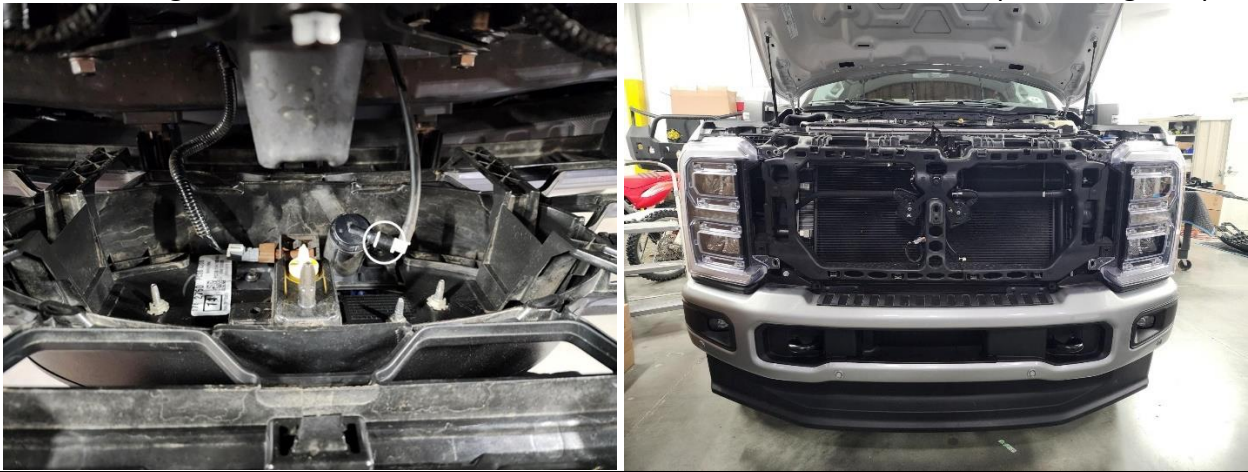


LP4 Backlight Instructions

1. Remove the core support cover by removing the plastic push rivets. With a 10mm socket, remove the 4 bolts on the top of the grill. Remove the small plastic covers on the lower grill to expose the two lower bolts and remove with a 10mm socket.



2. Carefully pull the front grill out disengaging the plastic clips. Remove the electrical connector and water line from the grill to free it. To remove the water line, remove the small black plastic ring and pull.



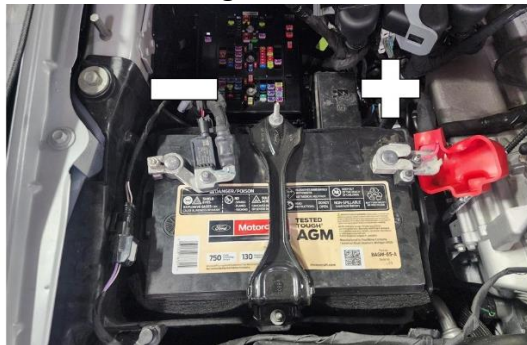
Remove the 2x 10mm bolts from the top of the DS headlight and the 13mm from the bottom by accessing it from the fender well. Pull the headlight out and remove the electrical connectors on the back. Find the included backlight wiring harness and locate the scotchlok connector. For trucks with stock LED headlights, place the scotchlok connector around the wire coming from Pin 8. For trucks with halogen bulbs, place the scotchlok around the Pin 2 wire of the two-pin connector.



4. Route the wire lead to the LP4s. Using a flathead screwdriver, remove the green cover on the front of the Deutsch connector of the main harness. Insert the wire into the #3 position until it clicks into place and replace the cover. Repeat for the other light. Tie all excess wire into a service loop and reinstall all removed components.



Replace all removed panels in the opposite order of removal. Reattach the negative battery cable to the battery and attach the black ring terminal. The install is now complete.



*Tie all wires away from sharp, hot, and/or rotating components.

* Re-torque all the fasteners after 100 miles.

*Your install is now complete! Thank you for choosing Baja Designs.